



中山市晶艺光电科技有限公司
ZHONGSHAN JEWELLY OPTOELECTRONIC TECHNOLOGY CO.,LTD.

样品承认书

品 名： 24*42 共阳白色彩屏

规 格： UL-2442BW3-H7.2

编 号： 2017-07

客户签字栏		
核准	审核	承认

本公司签字栏		
核准	审核	制作

地址：广东省中山市南区昌盛路4号

电话：0760-23886633 23886636 23886632

传真：0760-23886658

网址：www.jlul.com

电子邮箱：jinglei@jlul.com



PART NO.: UL-2442BW3-H7.2

ELECTRICAL AND OPTICAL CHARACTERISTICS(Ta=25℃)

Parameter	Symbol	Min	Typ	Max	Unit	Test Condition
Wave Length	λP	---	---	---	nm	IF=20mA(Note1)
Chromaticity	X	---	---	---	---	IF=20mA
Coordinates	Y		---	---		IF=20mA
Luminous Intensity	ϕ	---	2.2	---	LM	IF=20mA
Viewing Angle	$2\theta 1/2$	--	----	--	Deg	IF=20mA
Forward voltage	VF	2.6	3.0	3.8	V	IF=20mA

Remark: Viewing angle is the Off-axis angle at which the luminous intensity is half the axial luminous intensity.

ABSOLUTE MAXIMUN RATINGS(Ta=25℃)

Reverse Voltage.....5V

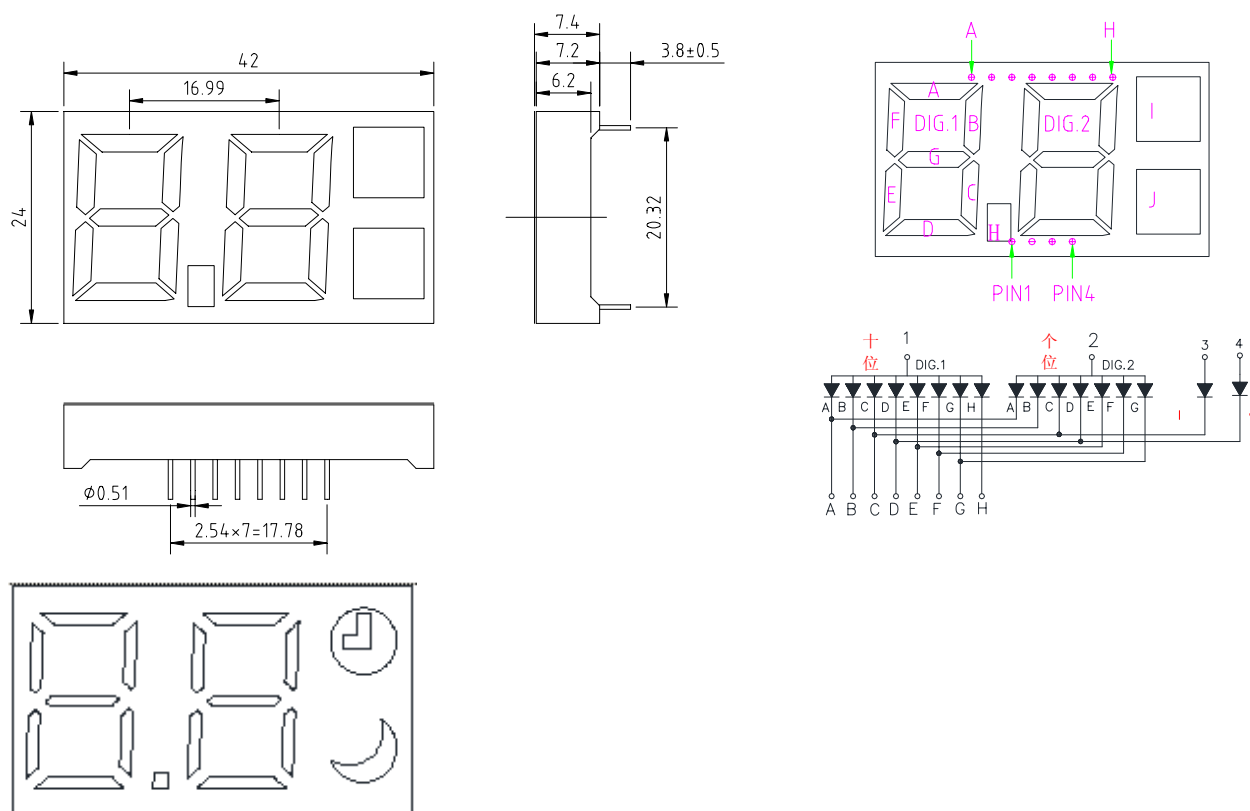
Reverse Current($V_R=5V$).....20 μA

Operating Temperature Range.....-25℃~+80℃

Storage Temperature Range.....-30℃~+80℃

Lead Soldering Temperature.....260℃ For 5 Seconds

■ PACKAGE DIMENSION:



面膜表面银色

未标注尺寸公差为: ± 0.2

客户名称:

工程确认:

日期:



中山市晶艺光电科技有限公司

ZHONGSHAN JEWELLY OPTOELECTRONIC TECHNOLOGY CO.,LTD.

PART NO.: UL-2442BW3-H7.2

TYPICAL ELECTRO-OPTICAL CHARACTERISTICS CURVE:

